



Silk Road Trading Co. (JAPAN)

<http://www.silkroad-trading.net>

International Exhibition

& conference on Environmental Challenges in
the ROPME sea Area



<http://www.silkroad-trading.net>

www.ropmefair.com

Contents

- Themes and Topics
- About ROPME
- ROPME Exhibition
- Visiting
- About Kish Island

Themes and Topics

- **Physical Oceanography and Marine Geology**
- **Marine Chemistry and Pollution**
- **Marine Ecology, Biology and Fisheries**
- **Emerging Issues**

Physical Oceanography and Marine Geology

- o Coastal morphology
- o Meteorology and climate change
- o Remote sensing and GIS
- o Riverine input
- o Hydrodynamics and sea water circulation
- o Upwelling and monsoon
- o Sedimentology
- o Sea level rise
- o Land-sea and air-sea interfaces

Marine Chemistry and Pollution

- o Nutrients and eutrophication
- o Persistent Organic Pollutants (POPs)
- o Radiation
- o Organic and inorganic pollutants
- o Eco-toxicology
- o Biogeochemistry of substances

Marine Ecology, Biology and Fisheries

- o Threatened species
- o Marine Protected Areas
- o Special Habitats (mangroves, corals, sea grass beds)
- o Invasive marine species (bio-invasions)
- o Food chains and energy flow
- o Biodiversity and ecosystem functioning
- o Plankton
- o Chlorophyll and primary productivity
- o Benthic communities
- o Microbial communities
- o Exploitable species
- o Fish population dynamics and stock assessment
- o Fisheries and aquaculture

Emerging Issues

- o Dredging, reclamation and coastal development
- o Harmful Algal Blooms (HABs)
- o Mass marine mortality
- o Climate Change
- o Natural disasters
- o Atmospheric fallout
- o Trans-boundary environmental issues
- o Impacts of water desalination and power plants
- o Marine emergencies (e.g. oil, gas and harmful substances)
- o Legal instruments and institutional mechanisms
- o Environmental Impact Assessment, Strategic Environmental Assessment (SEA), Ecological Risk Assessment, Natural Resource Damage Assessment
- o Innovative environmental technologies
- o Public health

About ROPME

- ROPME Introduction

- ROPME Conference

- Main Sponsors

- Organizer

ROPME Introduction

- The eight coastal States of the Region (Bahrain, I.R. Iran, Iraq, Kuwait, Oman, Qatar, Saudi Arabia and the United Arab Emirates) have been aware for a number of years of the vital necessity to coordinate a common action to protect the semi-enclosed sea surrounded by them. This great concern to protect the marine environment against pollution from various sources, prompted the State of Kuwait to propose in 1973 to the United Nations Environment Programmes (UNEP) that Kuwait is desirous of hosting an inter-governmental meeting of the States of the Region in order to develop necessary measures towards the matter. Later in 1974, the Representatives of the States of the Region, who were present at the Second Session of the UNEP Governing Council, brought to the attention of the Governing Council the interest in having UNEP associated with plans for the development of a programme to deal with environmental problems of the Region. In 1976 the UNEP Governing Council at its Fourth Session approved the action of the Government of Kuwait in proceeding with preparatory work for convening a regional conference to protect the area in question against pollution, which may give rise to an agreement entitled: "Kuwait Regional Agreement for Cooperation on the Protection of the Marine Environment from Pollution" or such other words as may be decided upon at the time of the conference.

* **Note:** If you want to know more please see web site of PROME

ROPME Conference

- ROPME is the Organizer of the Conference. Under the guidance of the Ministerial Council, ROPME has entered into an MoU with the Department Of Environment (DOE), I.R. Iran to act as Co-organizer.

H.E. Mr.Mohammad Javad Mohammadi-Zadeh, Vice President and Head, DOE-I.R. Iran is the PATRON of the Conference, while H.E. Dr. Abdul Rahman Al-Awadi, the Executive Secretary of ROPME is the Chairman.

An International Executive Committee will oversee the preparations and guide the conduct of the Conference, while also providing advice of eminence on strategies for sustainable development of the ROPME Sea Area. A Scientific Committee of renowned domain experts will prepare theme overviews and guide all technical activities.

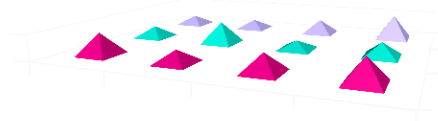
DOE-I.R. Iran has constituted an Organizing Committee, which is actively working on all required preparations. Information to help the participants plan their travel and stay will soon be posted on the Conference website by the Organizing Secretariat.

Many leading National, Regional and International Institutions and Organizations have expressed willingness to be associated with the Conference as sponsors. WHO, UNEP, CEDARE and IHB have already joined the elite group of sponsors and the Conference Website will soon provide an updated list of sponsors. Further, interested entities that desire to associate their names with this important Conference are encouraged to contact the Conference Coordinator.

The Conference will encourage participation of all individuals, institutions and organizations who have made contributions to the knowledge on the Region, hold interest in its future and have an opinion to be made heard by the stake holding community. Leaders from the fields of science, policy, management, industry and governance concerning the Region will be there.

Main Sponsors

■ Many leading National, Regional and International Institutions and Organizations have expressed willingness to be associated with the Conference as sponsors. WHO, UNEP, CEDARE and IHB have already joined the elite group of sponsors and the Conference Website will soon provide an updated list of sponsors. Further, interested entities that desire to associate their names with this important Conference are encouraged to contact the Conference Coordinator.



Organizer

- ROPME is the Organizer of the Conference. Under the guidance of the Ministerial Council, ROPME has entered into an MoU with the Department Of Environment (DOE), I.R. Iran to act as Co-organizer



ROPME

Regional Organization for the
Protection of
the Marine Environment



Department of the Environment
I.R.IRAN

ROPME Exhibition

- **Terms & Conditions**
- **Time & Location**
- **Plan Of Hall**
- **Cost and Payment Mode**
- **Facility and Services**

Terms & Conditions

■ Participation charges Indoor space

Rate (min. space 24 sqm): 150 US\$ per sqm Each 24 sqm of booth includes partition walls, floor carpet, one 100w light per each 3 sqm, one 5 amp/220v single phase socket, one waste paper basket, two chairs, one table and one fascia with the company name.

Indoor Raw Space

The organizer may provide exhibitors with a bare surface (if requested by the exhibitors) and in this case the exhibitors are required to build their stands at their own expenses. The minimum space for allocation shall be 36 sqm.

Title, Venue, Dates and the Organizer

Title: ROPME international exhibition
Venue: Kish Island, Islamic Republic of Iran
Exhibition days: 3-6 March 2013
Visiting hours: 16:00-22:00

Booth reservation deadline:

Deadline for booth reservation is 20 Feb 2013.

Secretariat of Exhibition:

Japan office:

Address: 2-4-5 chuou, Yonezawa, 9920045 Yamagata
Contact person: Alireza Majdabadi
Tel: 0081 238 220869
Fax: 0081 238 220869
Mobile: 0081 90 13725872
E-mail: ali-reza@sea.plala.or.jp

Time & Location

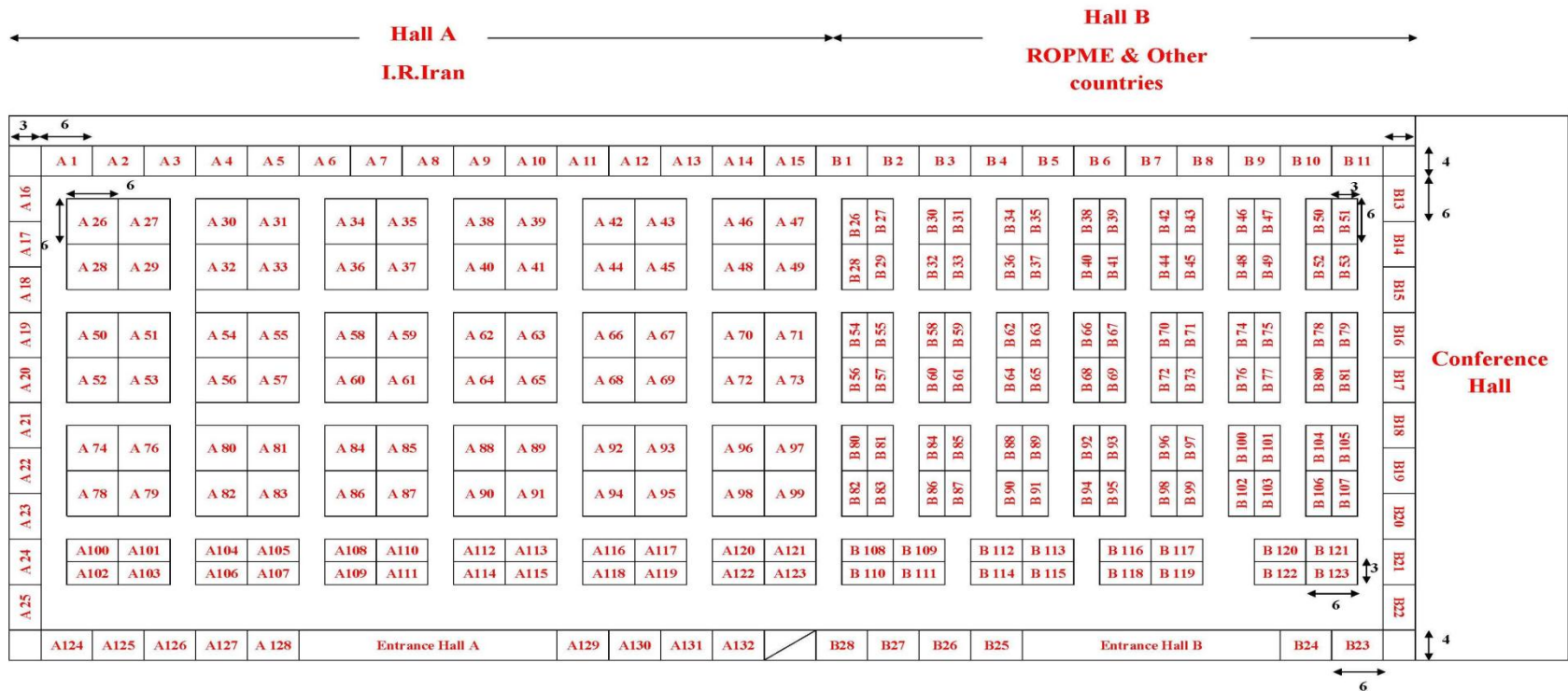
■ Title: ROPME international exhibition

Venue: Kish Island, Islamic Republic of Iran

Exhibition days: 3-6 March 2013

Visiting hours: 16:00-22:00

Plan Of Hall



Cost and Payment Mode

Rate:

150 US\$ per sqm (indoor)

Each booth includes partition walls, floor carpet, one 100w light per each 3 sqm, one 5 amp/220v single phase socket, one waste paper basket, two chairs, one table and one fascia with the company name.

Indoor Raw Space

The organizer may provide exhibitors with a bare surface (if requested by the exhibitors) and in this case the exhibitors are required to build their stands at their own expenses. The minimum space for allocation shall be 36 sqm.

100% of the total charges will be paid by cash before exhibition.

Exhibitors must complete application form online then an invoice will be send to them from UAE office by email.

Exhibitors must pay the amount of invoice to the bank account mentioned in the form.

Facility and Services and cost

1- The price of place to exhibition

(Exhibition space- Wall panels-Carpet- Company name plate- 2-lamp fluorescent lamp)

2- Airfare from Japan or China until Kish (Iran)
(for one person of your company)

3- Translator and the person responsible of each group of company

4- Customs clearance costs

5- Cost of decoration

6- Cost of Hotel and such as meal

*** The total of cost in Yen= ¥ 950000/**

(If more than one person plus ¥250000/ for each person)

Visiting

- Why visiting
- Airport and visa
- Travel Agency and Hotels
- Transportation in Kish

Why visiting

■ ROPME international exhibition is your unrivalled opportunity to source and select from an incredible global products and services showcase. A warm welcome awaits you at this event, where you will network with some industry peers and people passionate about driving the market forward.

The first ROPME international exhibition will create the best opportunity for whom that intent to familiar with the high technologies and ideas in protection of marine environment.

* Note: More information please see the website PROME.

Airport and visa

■ Located in center of the Kish, Kish International Airport is a 5-minute drive from the Kish Trade Centers.

* **No entry visa is required to Kish Island.**

* Foreign nationals who enter the Kish Island from abroad need not get a pervious visa. Those who intend to enter the mainland of the I.R of Iran before or after entering the Kish Island should apply for an entry visa in due time.

Travel Agency and Hotels

■ Now we are prepare the hotel and !!



* Note: If need more information please see the website [PROME](#)

Transportation in Kish

■ The road system in Kish Island is modern, well-lit and easily navigated by car. Public transportation is reliable. Rental cars are available at numerous locations. Air-conditioned taxis are readily available at major hotels or taxi stands. Their drivers are often literate but may not speak English. An international driving license is acceptable

* Note: More information please see the website PROME.

Kish Island

- About Kish Island
- Map of Kish Island
- Photo of Exhibition Place

About Kish Island

Kish Island has a unique situation in the strategic Persian Gulf region among tens of large and small islands. This island is so beautiful and attractive that it has become known as the Pearl of the Persian Gulf since ancient times.

Its calm coasts are covered with coral sands that shine in the sunlight, creating a unique and fascinating sight.

The clear coastal waters allow one to view several meters deep into the sea and watch the beautiful movement of the fish. Diverse plants and native trees, as well as a pleasant climate seven months a year are among the outstanding characteristics of the island.

The island has attracted many tourists, travelers and writers throughout history due to these very characteristics. Among those who have written in praise of this island are Niarkhous, the Greek navy commander who traveled to Kish in 225 B.C., and wrote about its beautiful palm fields, Marco Polo, Ibn Batuta and Hamdullah Mostofi, as well as Ms. Fatemeh Al Ali the contemporary Kuwaiti writer who traveled to Kish in February 2002 and compared the island to a “gem on a king’s crown”. Map of Kish Island

* Note: More information please see the website PROME.

Map of Kish Island



Kish, gem of the Persian Gulf

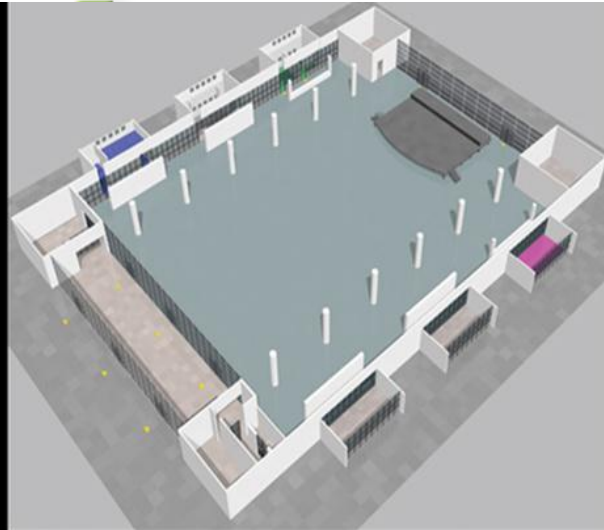
Kish Island has a unique situation in the strategic Persian Gulf region among tens of large and small islands. This island is so beautiful and attractive that it has become known as the Pearl of the Persian Gulf since ancient times.

Its calm coasts are covered with coral sands that shine in the sunlight, creating a unique and fascinating sight.

The clear coastal waters allow one to view several meters deep into the sea and watch the beautiful movement of the fish. Diverse plants and native trees, as well as a pleasant climate seven months a year are among the outstanding characteristics of the island.



Photo of Exhibition Place



3 d map of Kish City Hall

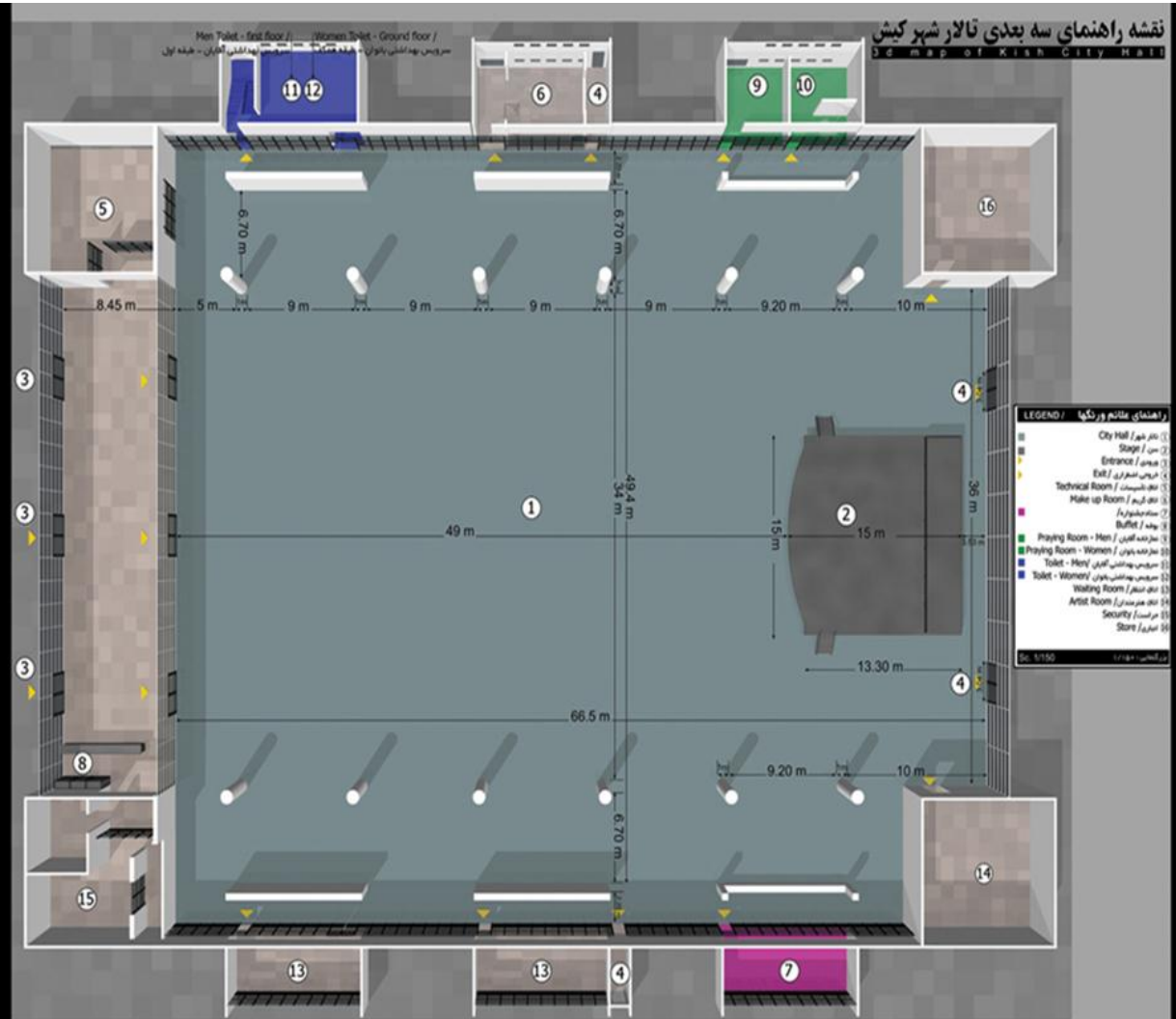


Photo of Exhibition Place



Photo of Exhibition Place

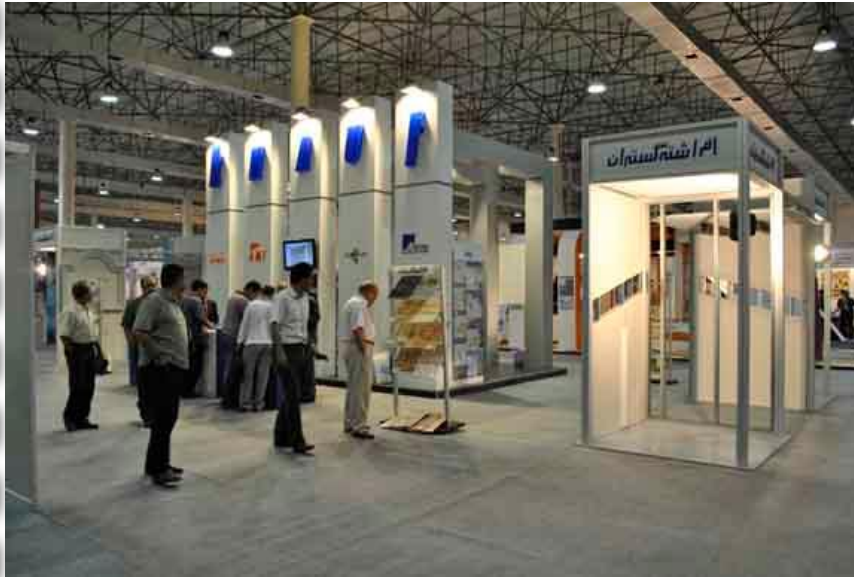
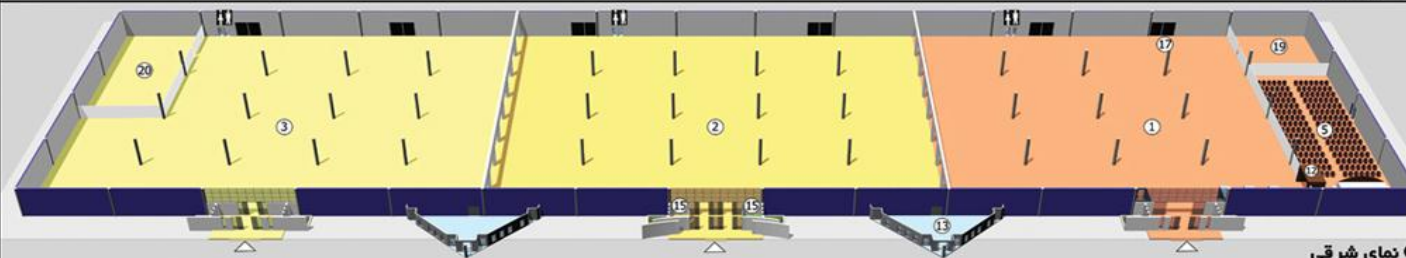
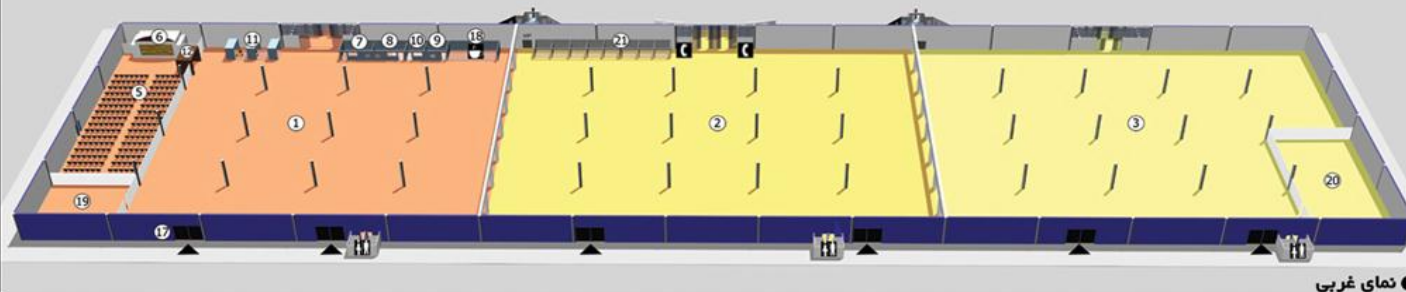
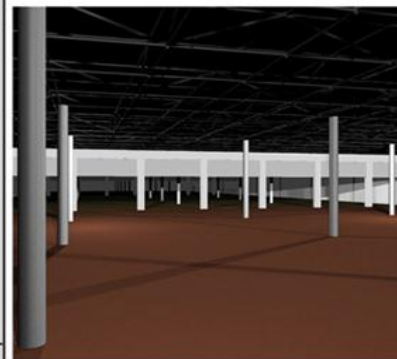
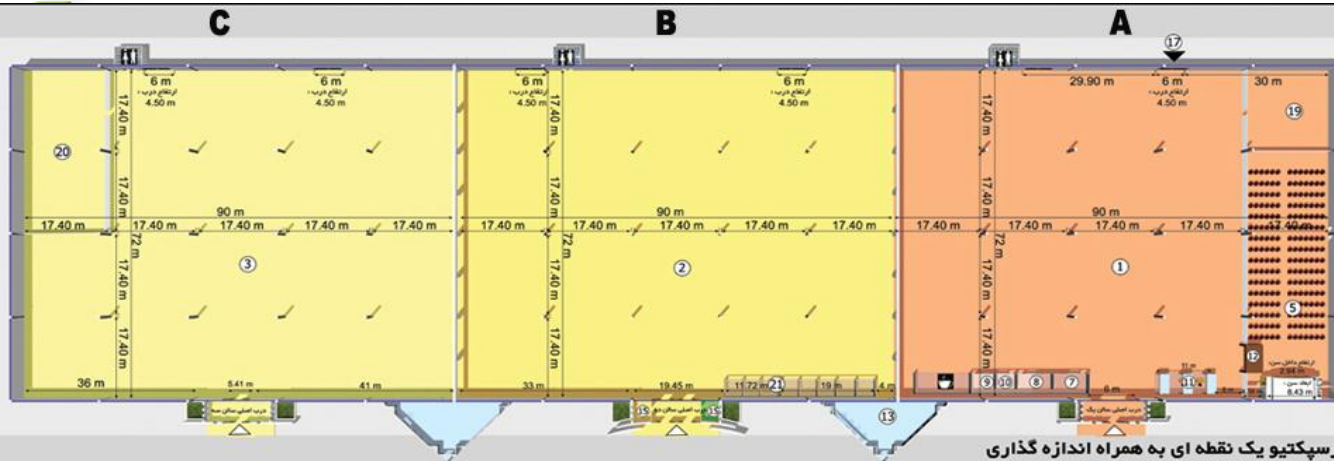


Photo of Exhibition Place



LEGEND / راهنمای علائم و رنگها

- Hall A / ۱ سالن ①
- Hall B / ۲ سالن ②
- Hall C / ۳ سالن ③
- Entrance / ورودی ④
- Meeting Hall / سالن اجتماعات ⑤
- Stage / سن ⑥
- ستاد برگزاری نمایشگاه / ⑦
- CCTV / اتاق فرمان ⑧
- Custom room / اتاق گمرک ⑨
- Technical room / دفتر فنی ⑩
- Cafe net / خدمات اینترنت ⑪
- ورودی سالن اجتماعات / ⑫
- VIP / تشریفات ⑬
- تلفن همگانی / Telephone ⑭
- نمازخانه / Praying room ⑮
- سرویس بهداشتی / Toilet ⑯
- درب ورود بار / ⑰
- Coffee Shop / کافه شاپ ⑱
- Store / انبار عمومی ⑲
- انبار تجهیزات اضافه / ⑳
- چایگاه ویژه خبرنگاران / Press ㉑

Sc. 1/400

بزرگنمایی: ۱/۴۰۰

Photo of Exhibition Place



Photo of Exhibition Place



■ ■ ■ ■ Photo of Exhibition Place



Photo of Exhibition Place



Contact us

Japan office:

Address: 2-4-5 chuou, Yonezawa, 9920045 Yamagata

Contact person: Alireza Majdabadi

Tel: 0081 238 220869

Fax: 0081 238 220869

Mobile: 0081 90 13725872

E-mail: ali-reza@sea.plala.or.jp

E-mail: ali.silkroad1997@yahoo.com

<http://www.silkroad-trading.net>